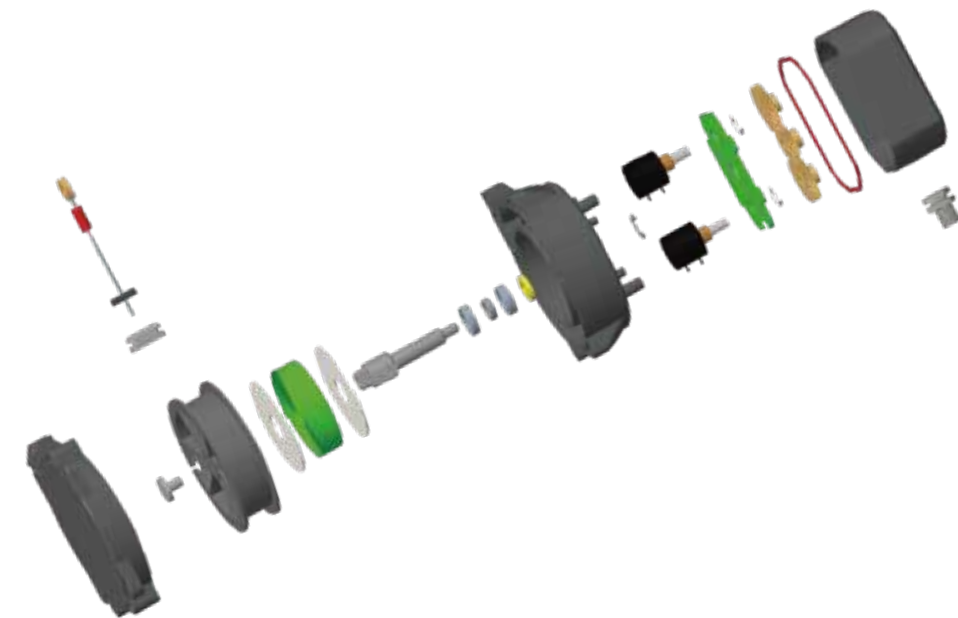


A central white circle containing a black hydraulic pump is connected by four white lines to four different hydraulic applications. The applications are: a yellow crane (top left), an orange boom lift (top right), a red fire truck (bottom left), and an orange scissor lift (bottom right). Each application has a blue circle with a white dot indicating the connection point for the hydraulic system.



Making Linear Measurement Easier

Length sensors are ideally suited for easy and accurate linear distance measurement, whether for construction machinery or test and measurement equipment. Despite the long measuring distances, the compact design of the rope sensors results in less installation effort than conventional products, and thanks to the robust components, the rope sensors operate reliably in harsh environments with low maintenance.



Product Advantages

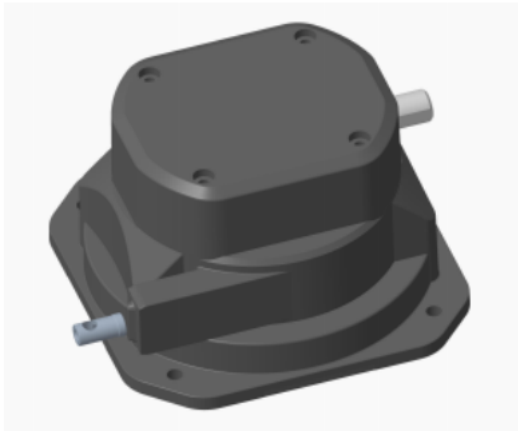
Compact and modular design
Measuring lengths up to 35m
Output signals CANopen and 4-20mA current type available
Wide range of mounting accessories for optimal and
reliable installation

LG--M length sensors

Product Features.

Add temperature compensation function, support full temperature zone compensation;

- Adopting imported plastic-coated steel wire rope, better softness;
- Adopting two-cavity design, the product shape is smaller;
- Redundant design to meet the needs of building a safe system architecture;
- Optimized shell and mechanism design, with stronger anti-vibration shock and anti-interference performance;



IP67

更高防护等级

抗振动 / 冲击

冗余输出

反接保护

-40...+85

工作温度

7x7

7×7 柔性钢丝绳

10 m

最大测量长度
10 m

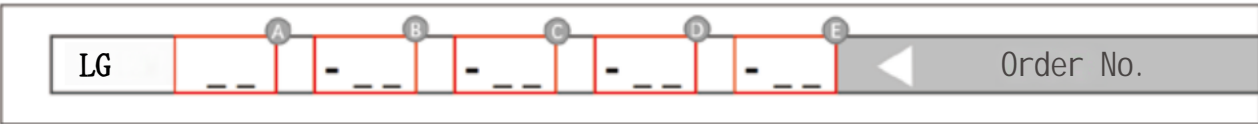
500.000

使用寿命

Analog

角度输出

产品型号 Product Model



A	测长范围	C	接头形式	E	其他
10	10m	A	M12接头	Y	冗余
12	12m	B	出线	N	非冗余
		C	定制		

B	输出信号	D	角度输出
1	CANopen	A	带角度输出
2	4~20mA	B	不带角度输出

parameters

Description	Parameters	Remark
Speed	1m/s	
Measuring length	12m	Customizable
Operating temperature	-40~+85℃	
Type of telemetry	Wire rope	
Shell material	ABS+PC	
Vibratory	30g ,10-2000Hz	
Impact	500g ,1ms	
Protection class	IP67	

Electrical parameters

Description	Parameters	Remark
Scope of supply	9~36VDC	
Length accuracy	±0.3%FS	
Angular range	±90°, < ±0.5°	
Signal output	CANopen/4~20mA	Customizable
EMC immunity	DIN EN 61000-6-2	
EMC Emission Interference	DIN EN 61000-6-4	

产品安装 Product Installation

